

Theme Eight: *Moving On*

WILDFLOWER IDENTIFICATION SCIENCE CENTER

[illegible]

1. Create the Wildflower Identification Science Center on a trifold presentation board similar to the picture above. The completed board will be set up as a Science Center for this week.
 - Pocket #1: Study the flower pictures and names
 - Pocket #2: Match flower pictures and names
 - Pocket/Label #3: Check your answers
 - Pocket #4: Choose a flower card. Take a paper. Reflect.
 - Pocket/Label #5: Turn in your paper!
2. Copy a set of Blacklines 1.13a – 1.13e on cardstock. Cut the flower cards apart. Choose one of the following options for the backs of the cards.
 - **Option 1: Printed Pictures**
 - Copy and cut out the color flower pictures on the following page (Reference Material, p. 3). Glue the pictures to the backs of the corresponding flower cards (Blacklines 1.13a – 1.13e).
 - **Option 2: Seed Packets**
 - Purchase wildflower seed packets for the following flowers: Oxeye Daisy, Common Sunflower, Prairie Buttercup, Lupine, Common Milkweed, Prairie Aster, Pickerelweed, Prairie Spiderwort, Prairie Phlox, Cone Flower

- Glue the seeds and matching flower packet to the back of each Blackline card so students can see a color picture of each flower.
- 3. Laminate the completed picture cards and place in Pocket # 1 of the trifold center activity board.
- 4. Create a second set of Blacklines 1.13a – 1.13e on cardstock. Laminate and cut the flower pictures apart from the pots with the flower names. Write numbers the backs of each flower/flowerpot so that students can self-check their matches. Place the completed cards in Pocket # 2 of the trifold center activity board.
- 5. Print multiple copies of Activity Master 8.1.2. Place in Pocket #4 on the trifold center activity board.
- 6. Place a small tray or basket under Pocket/Label #5. Students will place their completed copies of Activity Master 8.1.2 in this tray.

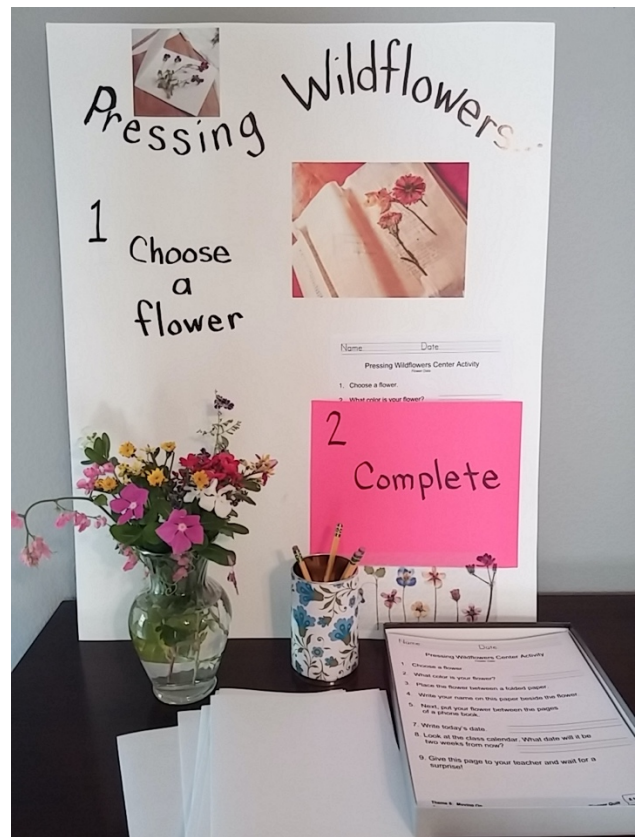


Flower Names from top left:

- 1 – Common Sunflower
- 2 – Oxeye Daisy
- 3 – Prairie Buttercup
- 4 – Lupine
- 5 – Common Milkweed
- 6 – Prairie Aster
- 7 – Pickerelweed
- 8 – Prairie Spiderwort
- 9 – Prairie Phlox
- 10 – Cone Flower

PRESSING WILDFLOWERS SCIENCE CENTER

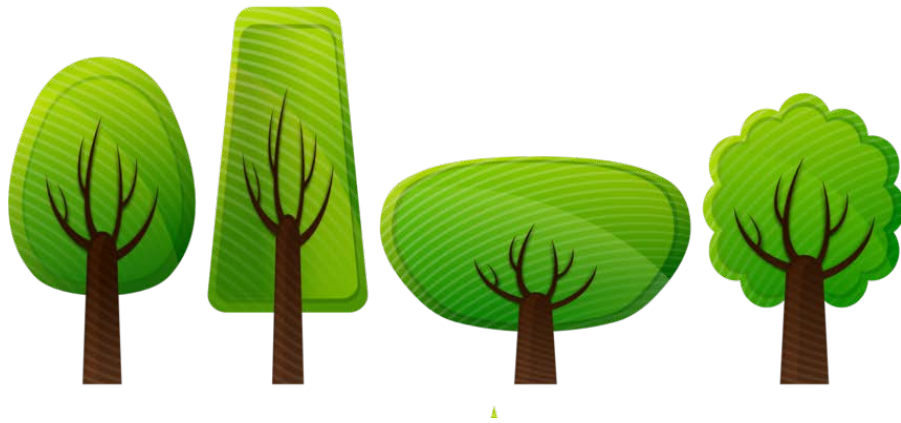
Teacher Instructions



1. Create the Pressing Wildflowers Center on sturdy poster board (or trifold presentation board) similar to the picture above. The completed board will be set up as a Science Center for this week.
2. Place the following in the center:
 - A bundle of assorted fresh wildflowers in a vase with water
 - Phonebooks
 - 8 ½ " X 14" white paper folded in half
 - Pencils
 - Multiple copies of Activity Master 8.1.3 for student use
 - Small tray or basket to collect completed copies of Activity Master 8.1.3
3. In order to avoid damage to the flowers being pressed, remove flowers daily. Place the day's pressed flowers in a different book away from student access. Place weight on the top of this book for better pressing. Be sure that students write their name on the paper to identify the student that pressed that flower.
4. Flowers should be pressed for approximately two weeks before being returned to students.

ARBOR DAY

CELEBRATION



DATE: _____

TIME: _____

LOCATION: _____

*You are
invited*