

End-of-Year Assessment: Acquisition

First Grade Answer Key

1.b

2.c

3.c

4.b

5.b

6.c

7.d

End-of-Year Assessment: Grammar First Grade Answer Key

1.c

2.c

3.b

4.c

5.c

6.d

7.b

End of the Year Grammar Assessment

Kindergarten

Answer Key

1. Accept ! or .
2. ?
3. .
4. Accept any answer that indicates that:
 - The children(They) are playing.
 - The children (They) are playing ball.
 - The children (They) are playing soccer.

End of the Year Vocabulary Acquisition Assessment- Kindergarten

Answer Key

1. A
2. C
3. D
4. D
5. B
6. A
7. D

Name _____

End-of-Year Vocabulary Assessment Kindergarten

Directions: Cut out the pictures.
Then, glue each picture next to the word it matches.

(large elephant)

large

(dress)

dress

(dark clouds and rains)

gloomy

(water flowing)

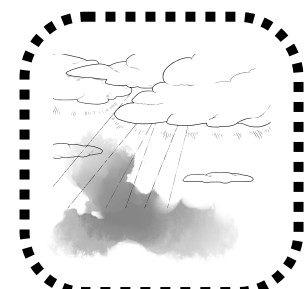
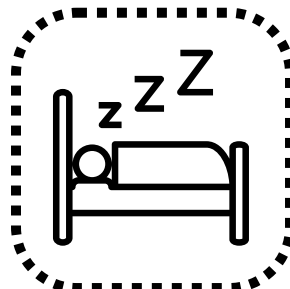
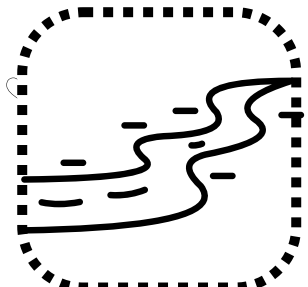
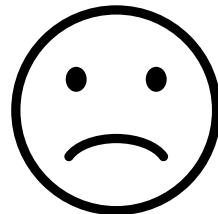
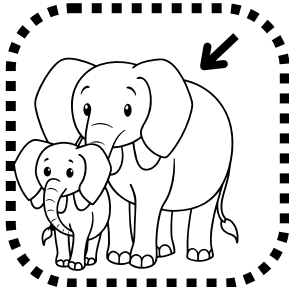
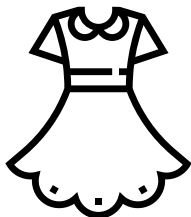
flowing

(person in bed/zzz for
sleeping/snoring)

asleep

(sad face)

unhappy



Name _____

Relate words with their real-life meaning. (K.AW1)

Vocabulary Assessment

Look at each word. Find the picture that matches. Draw a line to it.

preschool

unhappy

perform

unnamed

